

Welcome!

Thank you for joining us today. We will get started shortly.

Please change your display name to your first name, last name, and organization (if applicable).

1. To change your name, click on the “PARTICIPANTS” button at the top of the Zoom window
2. In the participants list, find and hover your mouse over your name and click the “Rename” button



Safety and Resilience Element Workshop

San Francisco General Plan

General Plan Virtual Events
March 16 and 25, 2021



San Francisco
Planning

Adam Varat
Deputy Director, Citywide Planning

Lisa Fisher
Senior Planner, Resilience +
Sustainability

Danielle Ngo
Planner, Resilience + Sustainability

San Francisco Planning is committed to creating a **safe and inclusive** environment free from disruption. Hateful speech or actions will not be tolerated. Respectful community participation is critical to a successful project.



San Francisco
Planning



Recording

Audio, video, and chat will be monitored and recorded.

This presentation will be transmitted live on our Youtube page.



Audio and Video

We respect all participants in this convening today and want to create a safe space for all.

By default, all participants will be muted, and video is disabled. Video will be on for speakers only.



Chat

To participate in the chat, please select the Chat button at the bottom of your screen.



LAND ACKNOWLEDGMENT

*We acknowledge that we are on the **unceded ancestral homeland of the Ramaytush Ohlone** who are the original inhabitants of the San Francisco Peninsula.*

Source: Wikipedia

Interactive Polls

Are you familiar with the Safety and Resilient Element?

- This is my first time hearing about it
- I know a little about it, but there's a lot more to know
- I know a lot about it, but there's some gaps in my knowledge
- I know it forwards and backwards

What role best describes you?

- Member of the general public
- Community leader or representative
- Developer or business leader
- Researcher or academic
- Elected official

What other issues do you care about?

- Housing
- Transportation
- Environmental Justice
- Racial and Social Equity
- City Recovery Strategies



AGENDA

1

Speaker: Adrienne Bechelli

2

Safety and Resilience Element Updates

3

Small Group Discussion

4

Next Steps



AGENDA

1 Speaker: Brian Strong

2 Safety and Resilience Element Updates

3 Small Group Discussion

4 Next Steps

San Francisco General Plan

SPEAKER REMARKS

The Global Climate Crisis Hits Home

Drought & Wildfire



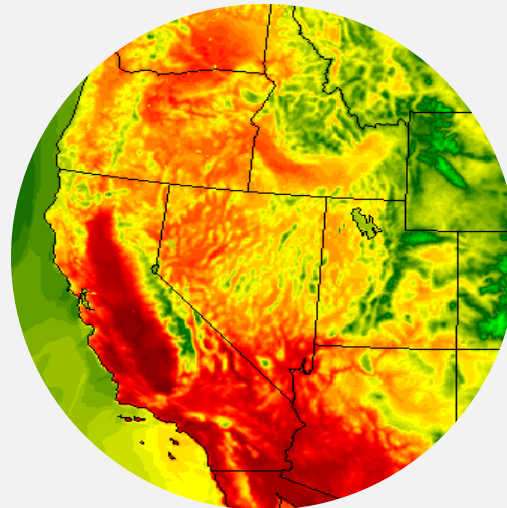
Poor Air Quality



Sea Level Rise & Flooding



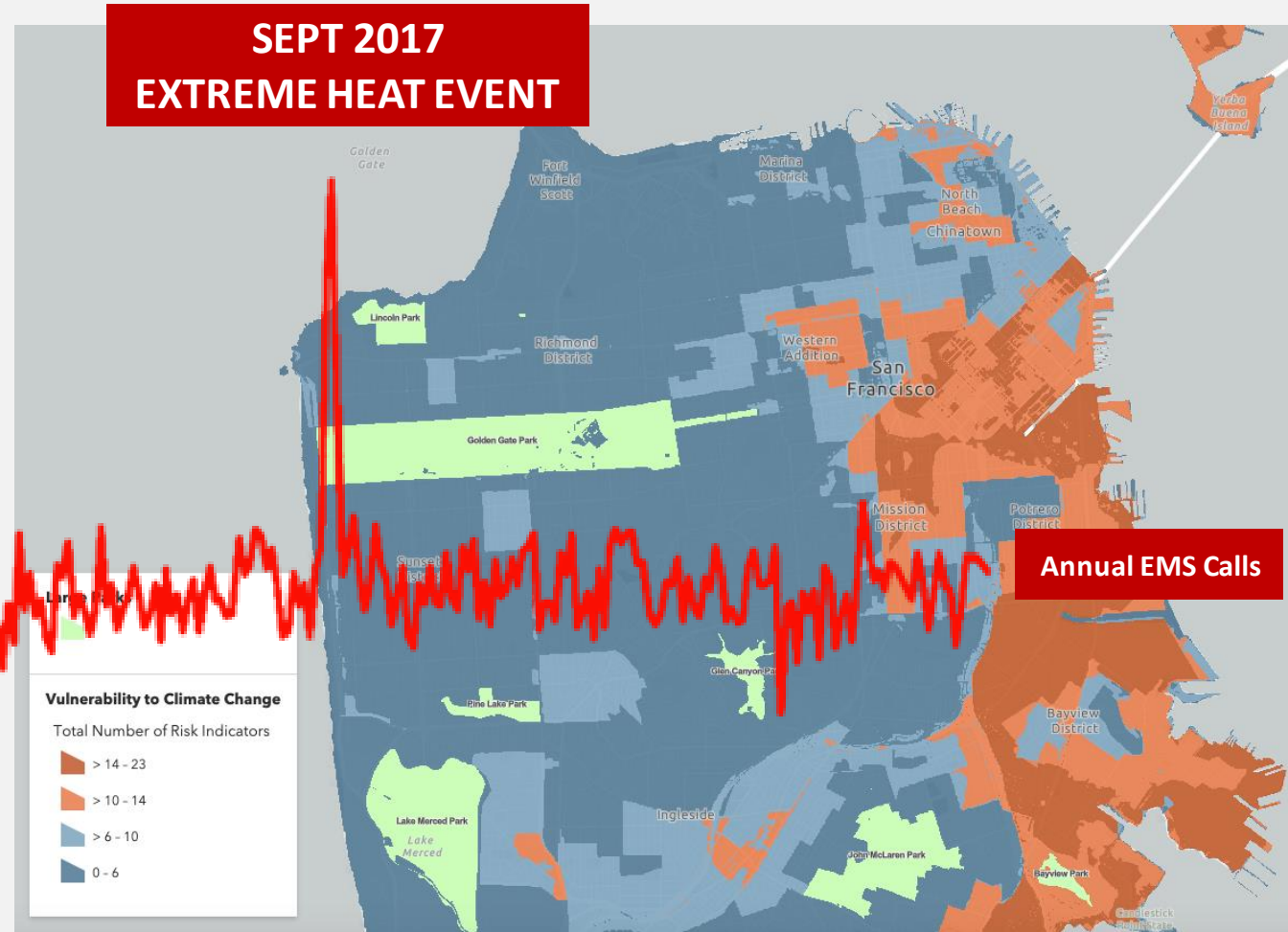
Extreme Heat



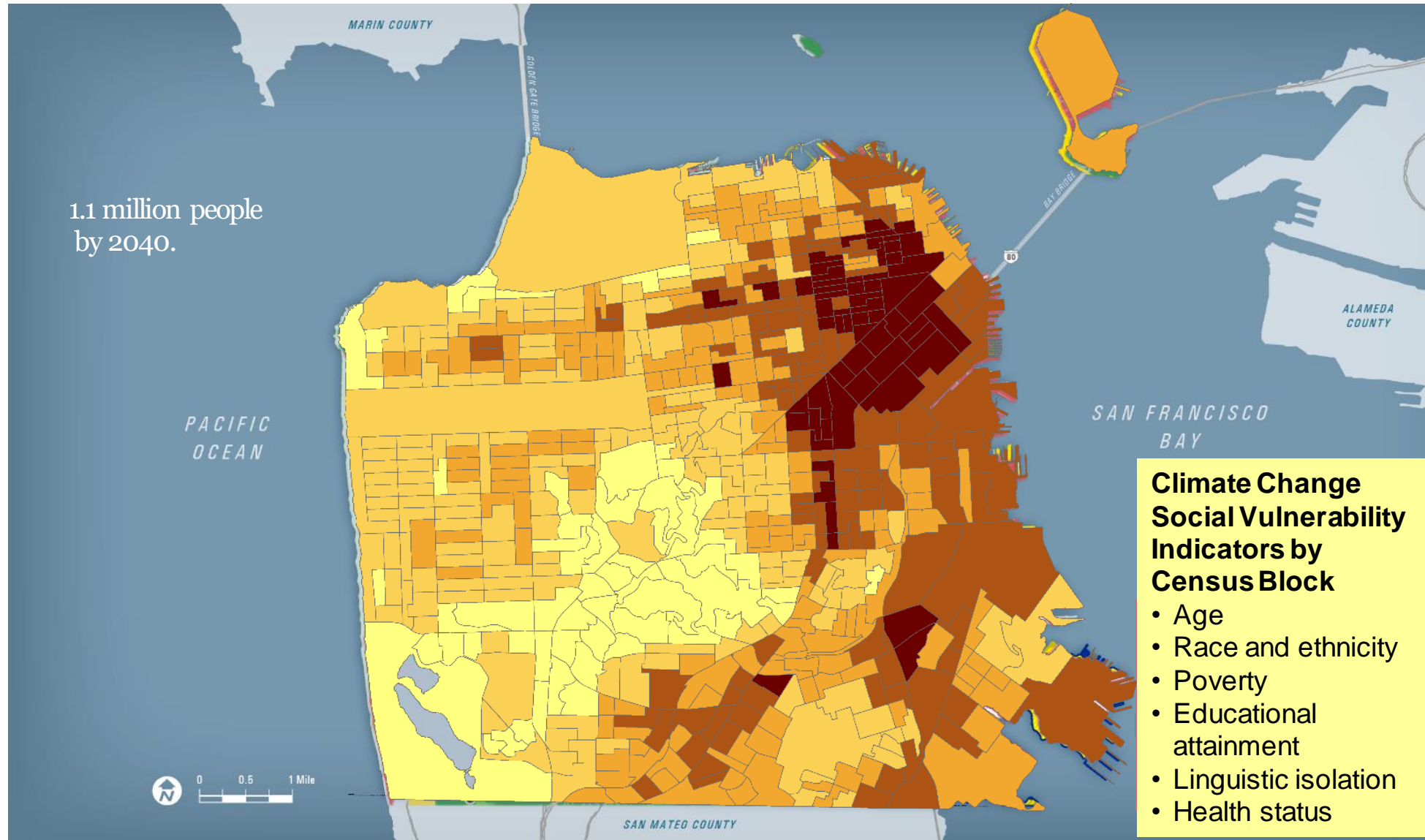
The Climate Crisis and Local Hazards

- As the climate crisis worsens and disasters strike, **disproportionate burdens** are suffered by increasing numbers of vulnerable residents
- This demands **racial and social equity** in all our work.

JAN 2017

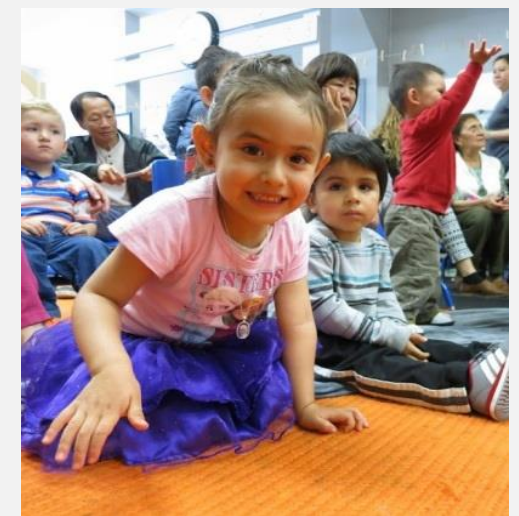
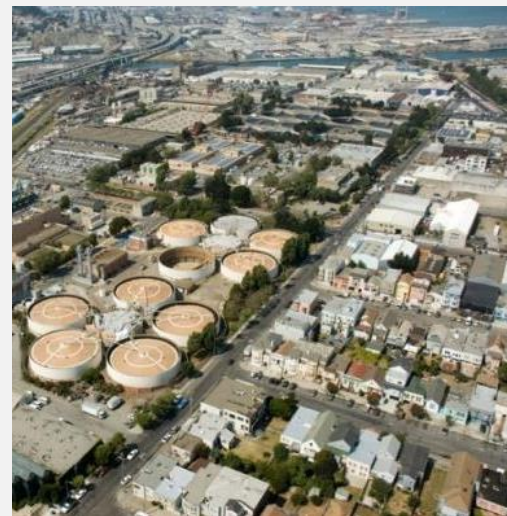


Resilience Challenges



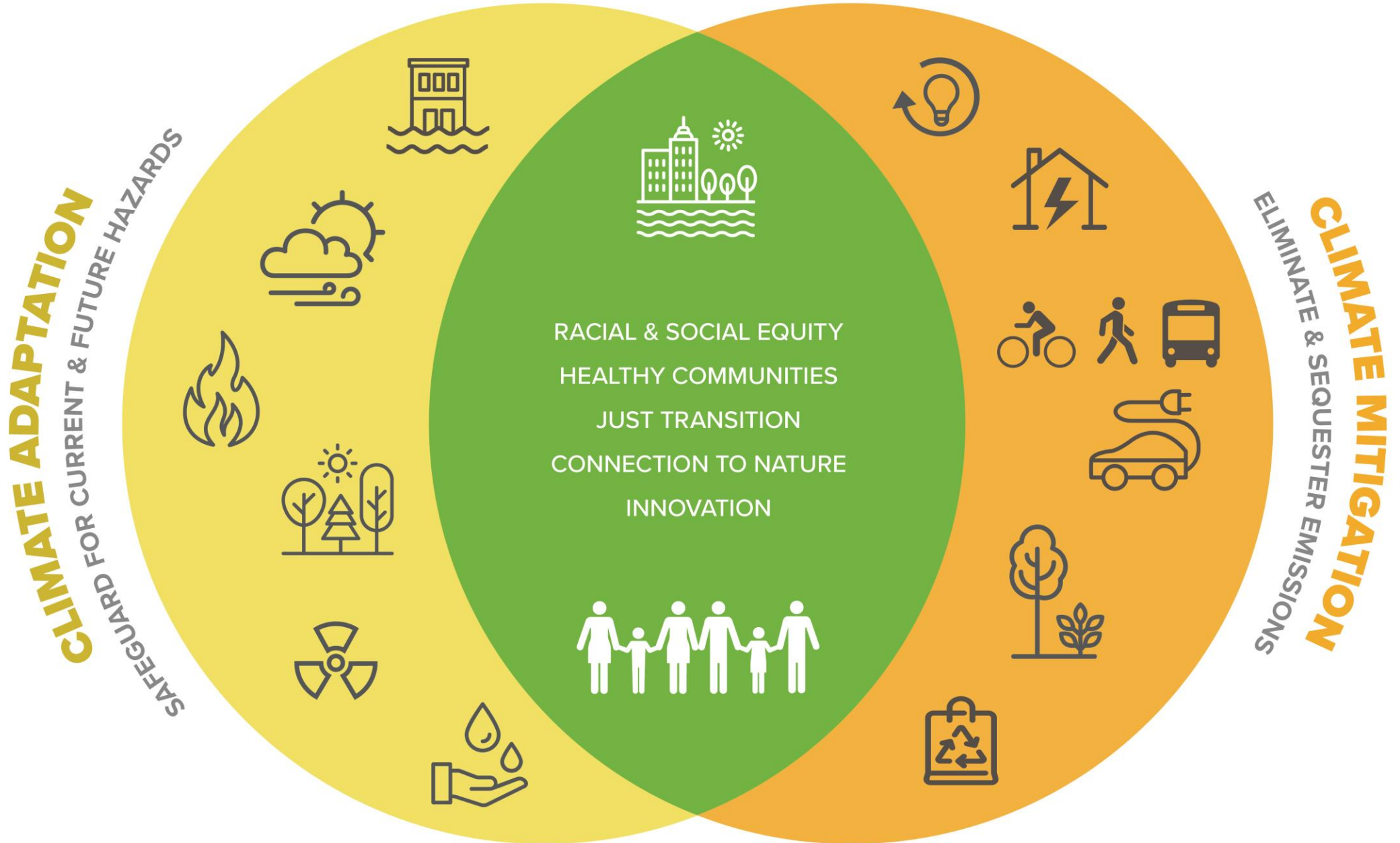
Alongside Other Challenges & Current Priorities

- Vaccine Distribution & COVID-19 Recovery
- Protect Housing & Stabilize Communities
- Advance Racial & Social Equity and Environmental Justice
- Enhance Public Health & Safety
- Support Responsive & Smart Public Investments



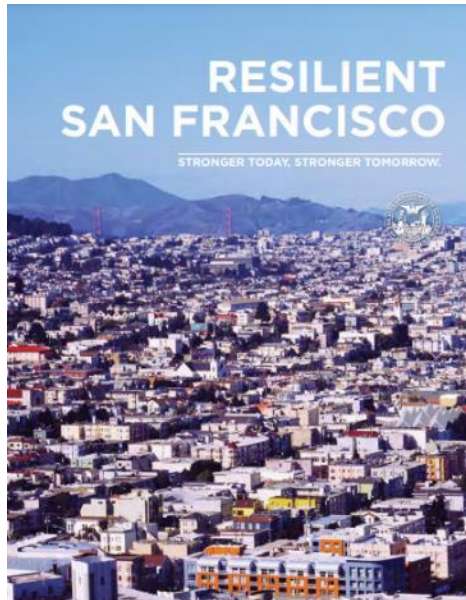
A CLIMATE RESILIENT SAN FRANCISCO

People - Buildings - Infrastructure



Guiding Strategic Plans

Resilient San Francisco



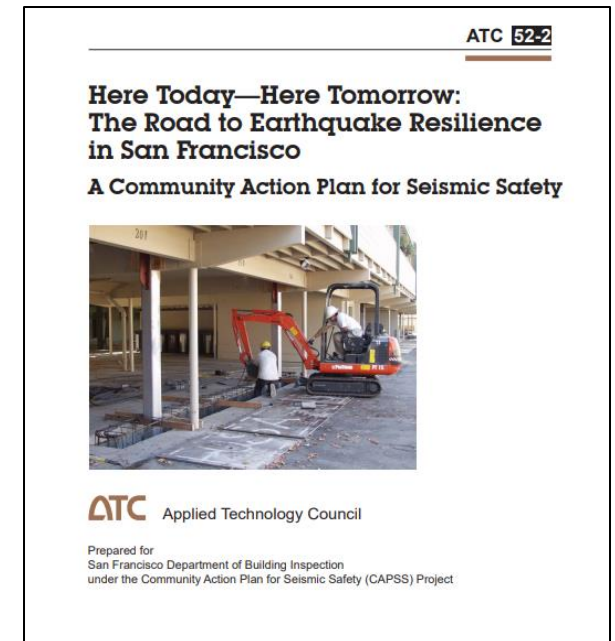
- Resilience definition and challenges
- On-going initiatives rolled into HCR

Hazards and Climate Resilience Plan (HCR)



- FEMA required LHMP
- 95+ actions
- Annual plan maintenance and 5 year update cycle

Community Action Plan for Seismic Safety



- 30 Year, 50 task strategy
- Earthquake Safety Implementation Program

San Francisco General Plan

SAFETY AND RESILIENCE ELEMENT UPDATES

Interactive Poll

- **What are your concerns today that will still be your concerns 10+ years from now? Please mark the three (3) hazards that most concern you and your community.**

- Air Quality (including wildfire smoke)
- Coastal and Stormwater Flooding
- Disease Outbreak
- Drought and Extreme Heat
- Earthquake and Landslide
- Hazardous Materials

- Reservoir/Dam Failure (unplanned release of water)
- Tsunami
- Urban Fire and Wildfire
- Extreme Wind
- Other (please specify in the chat): _____





CONTENTS

1

GENERAL PLAN

2

BUILDING BLOCKS

3

SAFETY AND RESILIENCE UPDATES

WHAT IS THE GENERAL PLAN



General Plan: Foundation




Photo: Flickr user Pablo Fernandez (CC BY-NC-ND2.0)

FOUNDATION

- Embodiment of San Francisco's **Vision for the Future**
- The General Plan provides a comprehensive vision, objectives, and policies that influence how we live, work, play, move about, and the quality and character of the city.
- Through public adoption, the General Plan reflects **community values** and **priorities**.
- Both **private development** and **public action** must conform to this vision.

General Plan Components: Last Update

 State mandated

Housing



2014



Commerce and industry



1987




Recreation and Open space




2014



Transportation



1995



Land Use (index)



Urban Design



1972/1988



Environmental Protection



1988



Community Facilities



1988



Safety & RESILIENCE




2012




Area Plans




Arts




1991



Air Quality



1997



NEW: HERITAGE CONSERVATION



NEW: ENVIRONMENTAL JUSTICE



Why Now



Hazards and Climate Resilience Plan:

Proposes over 90 strategies to mitigate risks and adapt to all hazards



Climate Action Plan: Roadmap becoming a net-zero city, per the Paris Climate Agreement



SB379: Requires cities to update Safety Element with climate resilience



SB1000: Requires cities to update General Plan with Environmental Justice element or policies



Increased focus on racial equity

- Creation of Office of Racial Equity
- Requirement for all Departments to create Racial Equity Plans
- Planning & Historic Preservation Commissions' resolutions to incorporate Racial & Social Equity into the General Plan

Racial and Social Equity



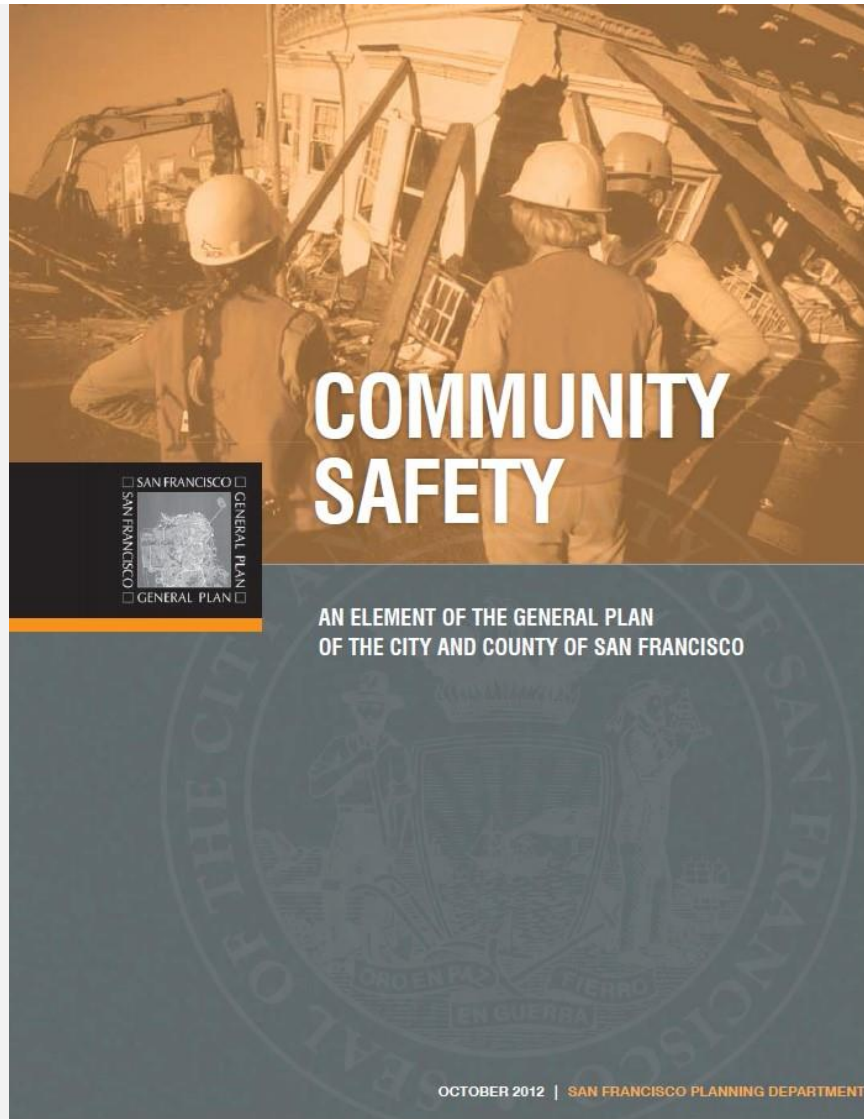
Planning Commission Resolution

...BE IT FURTHER RESOLVED, that the Planning Commission directs the Department to amend the General Plan to incorporate policies that explicitly prioritize racial and social equity for American Indian communities, Black communities, and communities of color; that subsequent amendments to the General Plan utilize a racial and social equity lens; and...

BUILDING BLOCKS



Last Updated in 2012



Community Safety Element (2012)

- Particularly strong in tackling **seismic hazards**
- Strong perspective on addressing **life safety**
- Increased focus on **recovery and reconstruction**

Hazards and Climate Resilience Plan

- Assessment of SF's vulnerability to hazards, including climate change impacts risk and build resilience
 - [Story Map](#) to increase awareness and share information
 - Actionable strategies to mitigate risk and build resilience
- Federal and State requirements
 - FEMA to be eligible for General Assistance and grant funds
 - SB 379 Climate Vulnerability Assessment & Adaptation Planning
 - Climate Hazard Assessment & Adaptation Actions



ENGAGEMENT SNAPSHOT



MONTHLY
STEERING
COMMITTEE
MEETINGS



30

STRATEGY SESSIONS

TECHNICAL WORKING
GROUP MET BI-WEEKLY



70

ORGANIZATIONS PARTICIPATED

597

SURVEY RESPONSE



PLANNING TEAM
MET **6** TIMES



9

PUBLIC PRESENTATIONS



Climate Action Plan



Energy
Supply



Transportation
& Land Use



Housing



Building
Operations



Responsible
Production &
Consumption



Healthy
Ecosystems

San Francisco Climate Action - Sectors



SF Environment
Our home. Our city. Our planet.

SF Resilience Projects Underway

(examples)



Portsmouth Square



Waterfront Resilience Program



Mission Rock



Ocean Beach Adaptation



Islais Creek Adaptation Strategy



Crane Cove Park – OPEN!

SAFETY AND RESILIENCE UPDATES



Existing Topics

Element Goals	Implementing Partner	Project or Program
Mitigation	e.g., SF Municipal Transportation Authority, SF Public Utilities Commission, SF PORT	e.g., Islais Creek Southeast Mobility Adaptation Strategy
Emergency Preparedness	e.g., Department of Emergency Management	e.g., Disaster Service Worker program, COVID-19 Command Center
Hazard Response	e.g., SF Human Services Agency, SF Homelessness and Supportive Housing	e.g., Great Plates, Mission Food Hub, School Meals Program
Recovery and Reconstruction	e.g., Office of Resilience and Capital Planning, Office of Economic and Workforce Development	e.g., Economic Recovery Task Force

Proposed New Content to Safety and Resilience Element



Equitable Community Safety

- Prioritize Vulnerable Communities
- Just Empowerment
- Community Benefits



Climate Resilience

- Climate Mitigation
- Climate Adaptation



Governance, Accountability, and Implementation

- Coordination Across City Agencies
- Coordination Across Government Bodies
- Partnerships With Non-Government Bodies
- Advance Capital Planning and Funding
- Research
- Monitoring

Proposed New Content to Safety and Resilience Element

(sample)

Element Goals	Strategies	Outcomes
Equitable Community Safety	Prioritizing Vulnerable Communities	Use safety and resilience as a way of remediating existing disparities and redressing past systems-levels harms
Climate Resilience	Multi-Hazard Resilience	Maximize investments that build resilience against the shared threats and vulnerabilities of multiple hazards
Governance, Accountability, and Implementation	Partnerships with Non-Government Bodies	Work with community organizations, institutions, and development partners to reach all San Franciscans

This Work Strengthens Resilience to All Hazards

GEOLOGICAL



EARTHQUAKE



TSUNAMI



LANDSLIDE



DAM OR RESERVOIR
FAILURE

WEATHER-RELATED



FLOODING



HIGH WIND



EXTREME HEAT



DROUGHT

FIRE-RELATED



LARGE URBAN FIRE



WILDFIRE



POOR AIR QUALITY

BIOLOGICAL & TOXIC

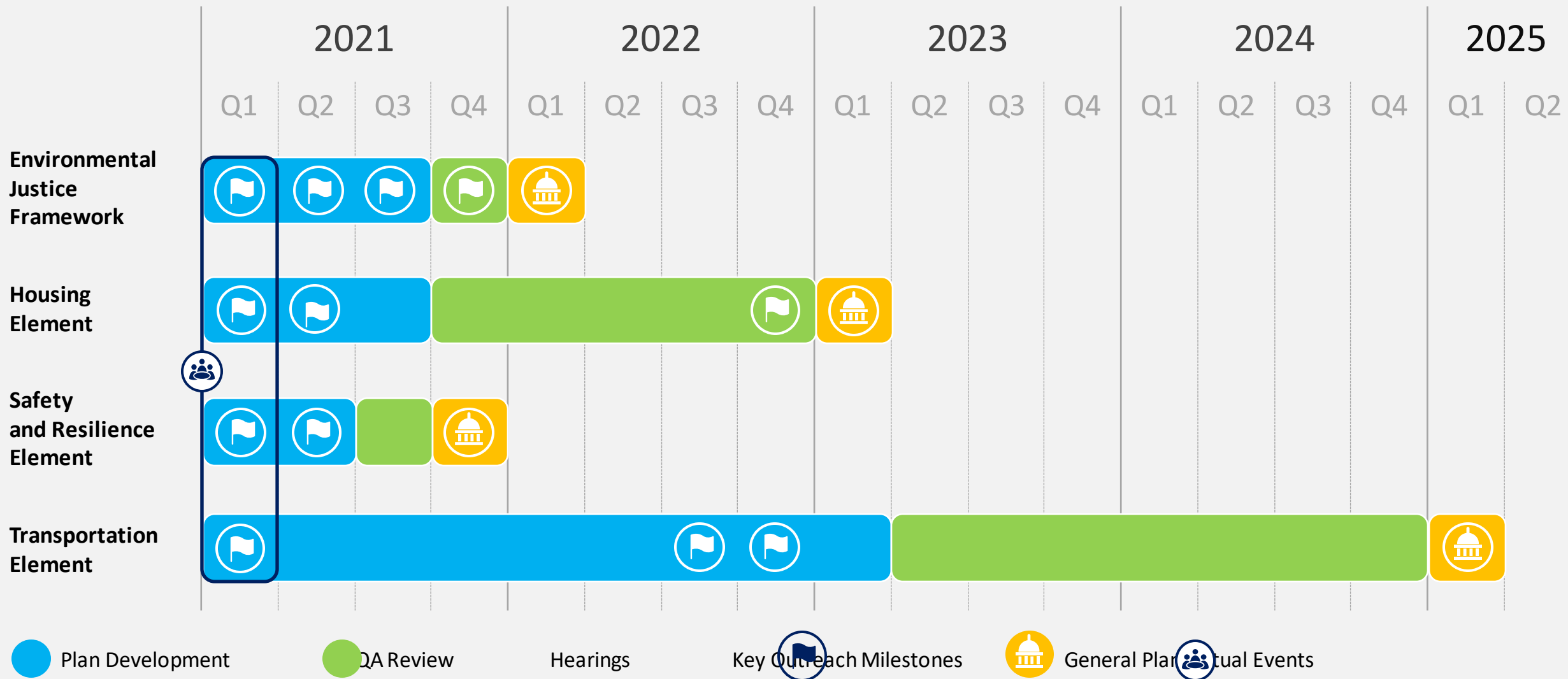


PANDEMIC



HAZARDOUS
MATERIALS

General Plan Updates - Combined Schedule



Interactive Poll

- **From the proposed new content, what topics are most supportive of your community? Please mark the top three (3) topics.**
 - Prioritizing ENVIRONMENTAL JUSTICE communities in implementing actions
 - Providing resources, services, and opportunities to EMPOWER all San Franciscans
 - Leveraging investments for COMMUNITY BENEFITS in public health, environmental quality, and economic opportunity
 - Achieving NET-ZERO EMISSIONS while preparing and protecting people and assets
 - Coordinating across CITY GOVERNMENT on decisions, funding, risk allocation, and outreach
 - Partnering with NON-GOVERNMENT BODIES to reach all San Franciscans
 - Supporting RESEARCH AND MONITORING of all hazards in the Bay Area, including their impacts to people and assets



Q&A

BREAKOUT ROOMS

For those joining us live through YouTube, we are going to end the livestream now for breakout room activities.

SMALL GROUP DISCUSSION

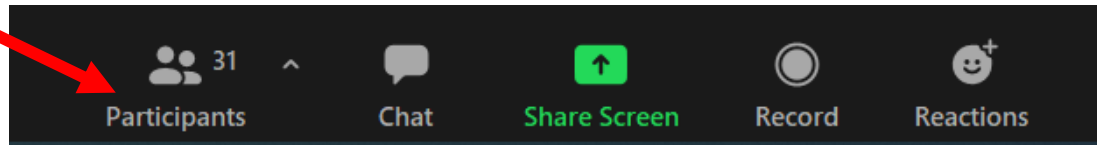
Break Out Rooms: **Community Agreements**

- We encourage **everyone to participate** in the discussion
- Please be respectful of everyone's opinions
- We want to hear **your input based on your perspectives and experiences** as SF community members
- To participate, raise your hand to speak by using the Raise Hand button in the Participants window or use the Chat to ask for a turn to share
- When it's your turn:
 - Turn on the microphone to share your input and mute it again when you are done for others to participate
 - Please introduce yourself and speak slowly
- Please, **use the chat function** if you prefer to provide feedback that way

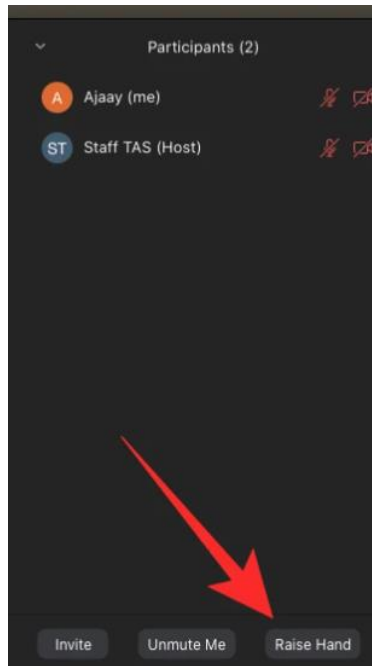
Raise Hand Function

On windows and pc

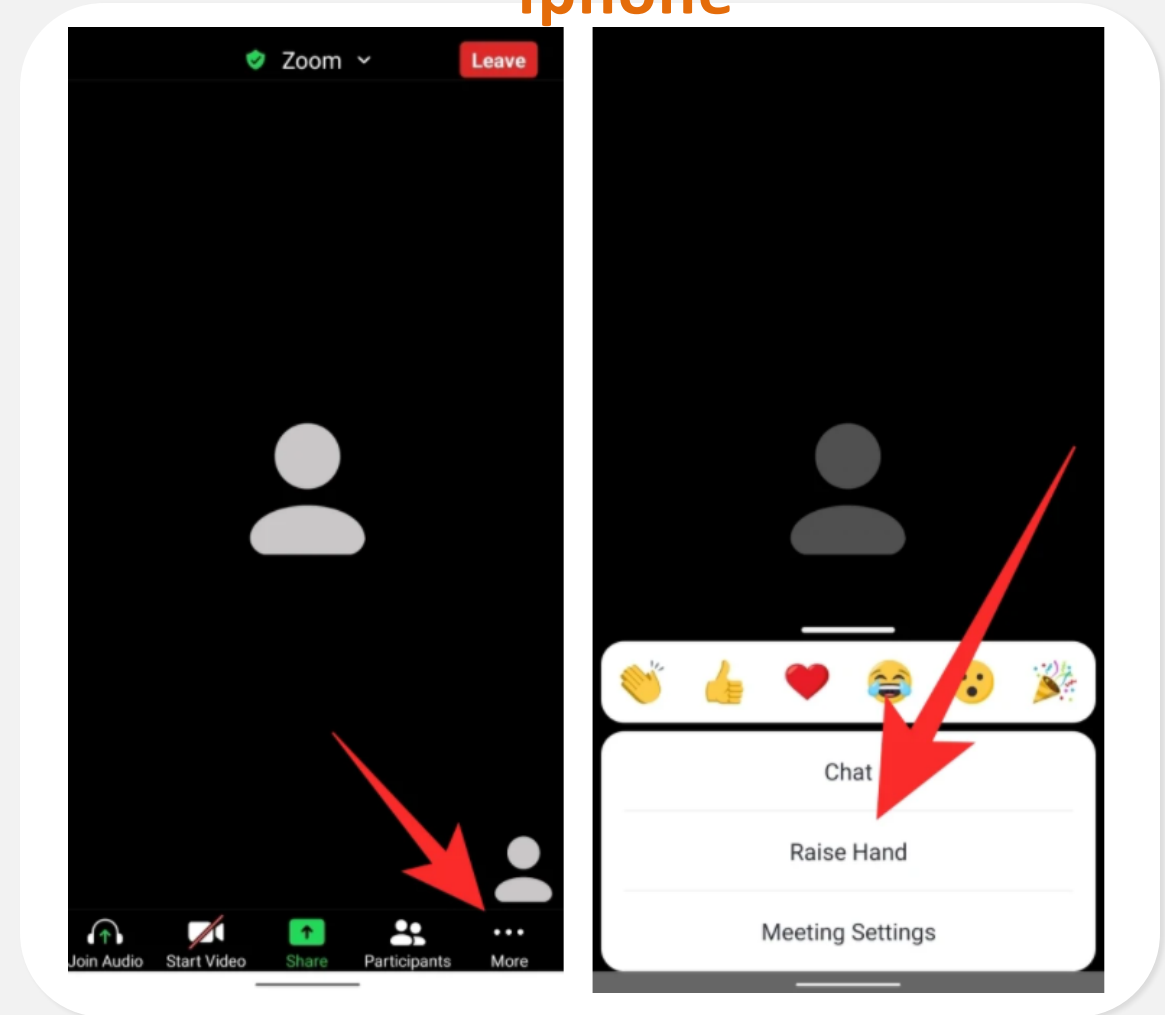
1. Click the participant icon



2. Select the "raise hand" button at the bottom right



On android and iphone



Small Group Discussion

- In recent years, what have you learned that provides you with a **sense of safety and resilience**? What continues to cause concern?
- What ideas do you have to **prioritize communities** that are impacted first and worst by hazards?



Proposed New Content to Safety and Resilience Element



Equitable Community Safety

- Prioritize Vulnerable Communities
- Just Empowerment
- Community Benefits



Climate Resilience

- Climate Mitigation
- Climate Adaptation



Governance, Accountability, and Implementation

- Coordination Across City Agencies
- Coordination Across Government Bodies
- Partnerships With Non-Government Bodies
- Advance Capital Planning and Funding
- Research
- Monitoring

Other Contents of the Safety and Resilience Element

Hazard Mitigation

- Existing Buildings
- New Buildings
- Infrastructure and Public Realm
- Specific Hazards

Emergency Preparedness

- Awareness and Capacity Building
- City Agency Capabilities
- Citywide Cooperation

Response

- Lifelines
- Community Partnerships
- Hazard-Specific Response

Recovery and Reconstruction

- Buildings and Infrastructure
- Advance Recovery Planning
- Equitable Investment

NEXT STEPS

General Plan Virtual Events



March 15-19 & March 22-26, 2021

<https://sfplanning.org/general-plan>

Two weeks of workshops on:
 Housing Element
 Environmental Justice Framework
 Safety Element
 Transportation Element
 General Plan 101
 Racial and Social Equity Plan
 And more!

	MONDAY MARCH 15	TUESDAY MARCH 16	WEDNESDAY MARCH 17	THURSDAY MARCH 18	FRIDAY MARCH 19
9:00 AM					
10:00 AM					Community Engagement
11:00 AM					
NOON	What Planning Does		Planning for Healthy Communities		
1:00 PM					
2:00 PM		Workshop: Community Safety	Racial & Social Equity Action Plan	Workshop: Transportation Element	
3:00 PM	General Plan 101				
4:00 PM					
5:00 PM					
6:00 PM			Workshop: Environmental Justice Framework	Info Session: Housing Element	
7:00 PM					

	MONDAY MARCH 22	TUESDAY MARCH 23	WEDNESDAY MARCH 24	THURSDAY MARCH 25	FRIDAY MARCH 26
9:00 AM					
10:00 AM	General Plan 101				
11:00 AM					
NOON					
1:00 PM			Recovery Strategies Workshop		
2:00 PM		Info Session: Housing Element		Workshop: Environmental Justice	
3:00 PM					
4:00 PM					
5:00 PM					
6:00 PM	Recovery Strategies Workshop	Workshop: Transportation	Racial & Social Equity Action Plan	Workshop: Community Safety	
7:00 PM					

Tell us what you thought of this session!



FILL OUT THIS EXIT SURVEY:

<https://tinyurl.com/SFGenPlanExperience>

At the conclusion of the General Plan Virtual Events, we will send out an additional survey asking for feedback on our General Plan updates underway.

A screenshot of a web-based feedback form titled "General Plan Virtual Events Feedback Form". The form has a header image of a city skyline with the text "General Plan Virtual Events" overlaid. Below the header, the title "General Plan Virtual Events Feedback Form" is displayed. A paragraph of text thanks the user for attending and asks for feedback. A red asterisk indicates a required field. Below this is a dropdown menu labeled "Which session did you attend? *" with the word "Choose" and a downward arrow. At the bottom, there is a legend for a Likert scale: "Please indicate the strength of your agreement with each statement below. *". The legend includes five options: "Strongly Agree", "Agree", "Neutral", "Disagree", and "Strongly Disagree", followed by "N/A".

General Plan Virtual Events

General Plan Virtual Events Feedback Form

Thank you for attending the General Plan Virtual Events! Your participation and experience is important to us. Please provide us feedback on the session(s) you attended by completing this survey. You may repeat the survey for each session you attend. With your feedback, we will improve our outreach and engagement in the future.

** Required*

Which session did you attend? *

Choose ▾

Please indicate the strength of your agreement with each statement below. *

Strongly Agree Agree Neutral Disagree Strongly Disagree N/A