



**THE BAY  
LANDS  
NORTH**

Annual Visitation Valley Meeting  
November 9, 2021



# Brisbane Baylands

- General Plan Amendment
- Processing Entitlements
- Sustainability



# The Baylands North

## Background:

- Original Schlage Lock factory site circa 1929
- Under the CA Redevelopment Agency until 2011
- Development Agreement executed in 2014
- Contract between developer and CCSF
- Phased delivery with hurdle milestones
- 15% Affordable Housing requirement

## Project Highlights:

- 1,679 residential units
- 9 distinct building parcels
- 47,000 sf retail
- 2 public parks
- 1 Historical Office Building
- 1 adjacent regional rail station
- 1 grocery store
- 2 adjacent metro rail stations
- Onsite parking for nearly 1,200 vehicles

# The Baylands North

- The COVID-19 global pandemic continues to create unprecedented challenges for San Francisco's real estate market, and consequently our project schedule has been impacted.
- We remain committed to building The BayLands, and we have exciting updates to share concerning the community space and opportunities for community participation.

**PROPOSED PHASE 1 MASSING**  
VIEW FROM NORTH



## Coming in 2022

- Restoration of the Historic Office Building Completed – **Early 2022**
- BDI moves into the Historic Building – **Early 2022**
- First phase of construction of new streets and infrastructure will continue throughout the phasing – **TBD**
- Construction of phase one housing – **TBD**
- Caltrain Pedestrian Connection – **TBD**



# Historic Office Building



# Historic Office Building



Front Exterior

# Historic Office Building



Back Exterior



# Historic Office Building



**Aerial Exterior**

## Community Space

- Our commitment is to provide 25% of the Historic Office Building (approximately 4,000 square feet) for community use.
- We have designated the lower floor for the community space, complete with a private entrance that can be used during non-business hours and with direct access to the plaza.
- We expect to continue community outreach, including scheduling meetings to discuss potential uses and programming, as well as welcoming the community for tours of the space in early 2022.

# Newsletter Survey Results Community Space

**Q1 What activities and programming would you like to see within the future community space in the historic Schlage Lock office building?**

Top Three Choices

- General event space (27 votes)
- Community meeting space (27 votes)
- Art and cultural space (26 votes)

**Q2 What types of activities are most needed in the neighborhood?**

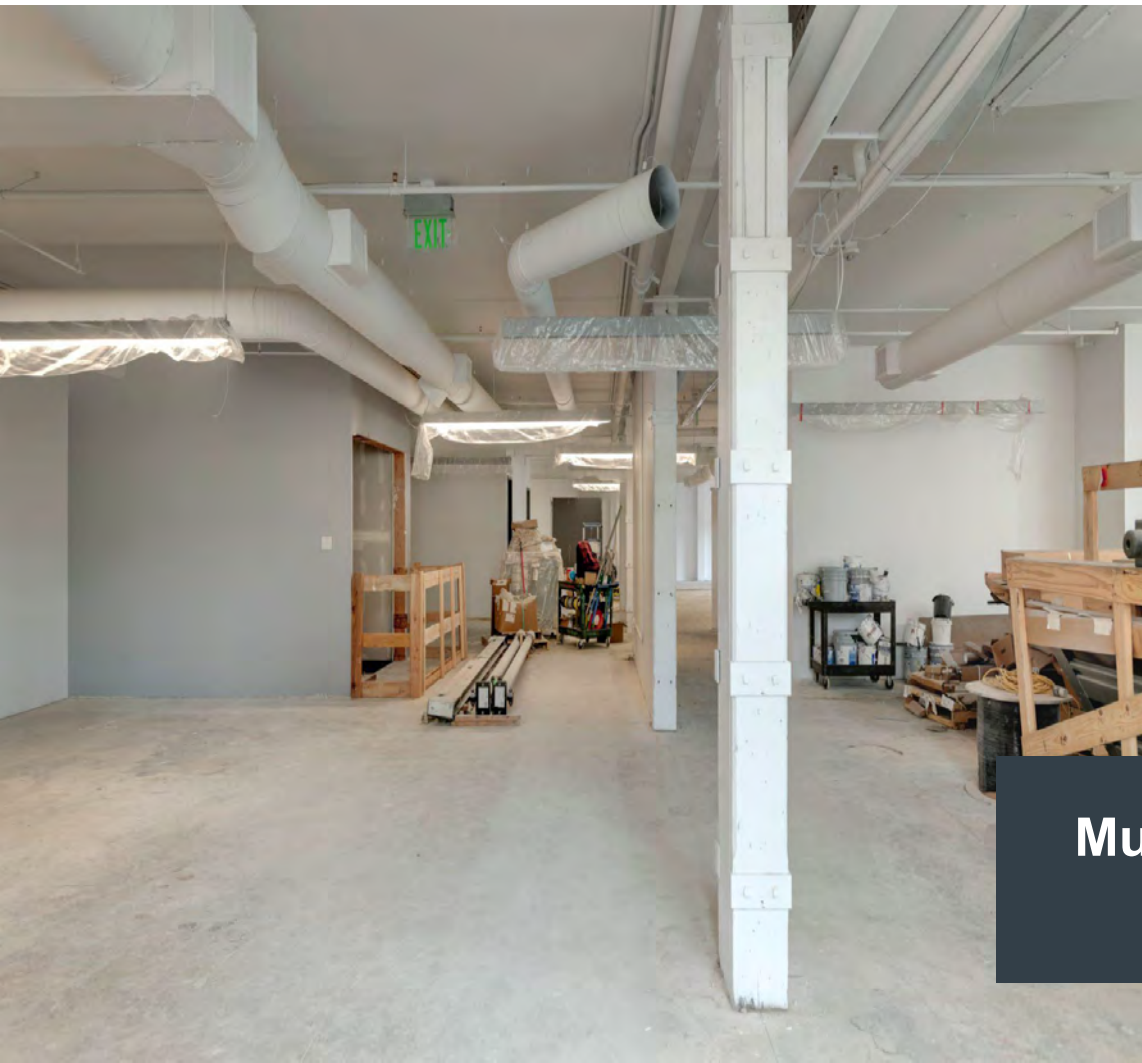
Top Two Choices

- Activities for seniors (40 responses)
- Activities for children and youth (40 responses)

**68 RESPONSES**



# Community Space Interior Images



**Multi-Function  
Space**

# Community Space Interior Images



**Multi-Function  
Space**

# Community Space Interior Images



**Elevator Bank**

# Community Space Interior Images



**Kitchen**



# Community Space Exterior Images



**Plaza Access**

# Landscaping



*Yucca whipplei*  
w/ *Hechera 'Wendy'*  
Our Lord's Candle  
w/Wendy's Island Alum



*Mahonia 'Soft Caress'*  
Soft Caress Mahonia



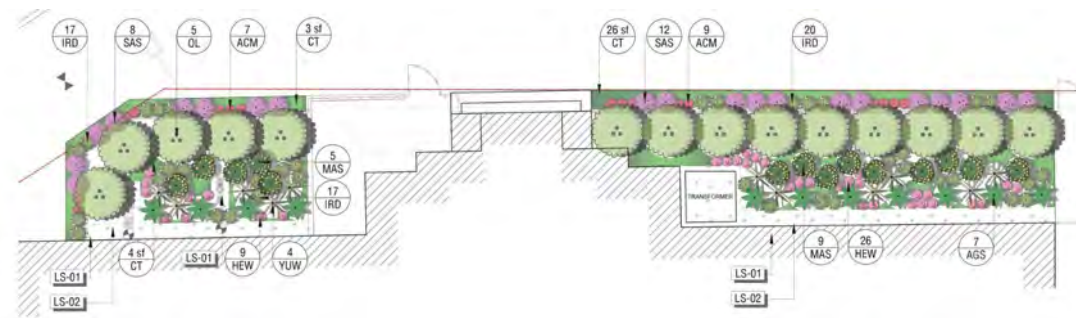
*Agave shawii*  
w/*Carex tumulicola*  
& *Iris douglasiana*  
Shaw's Agave  
w/Foothill Sedge  
& Bearded Iris



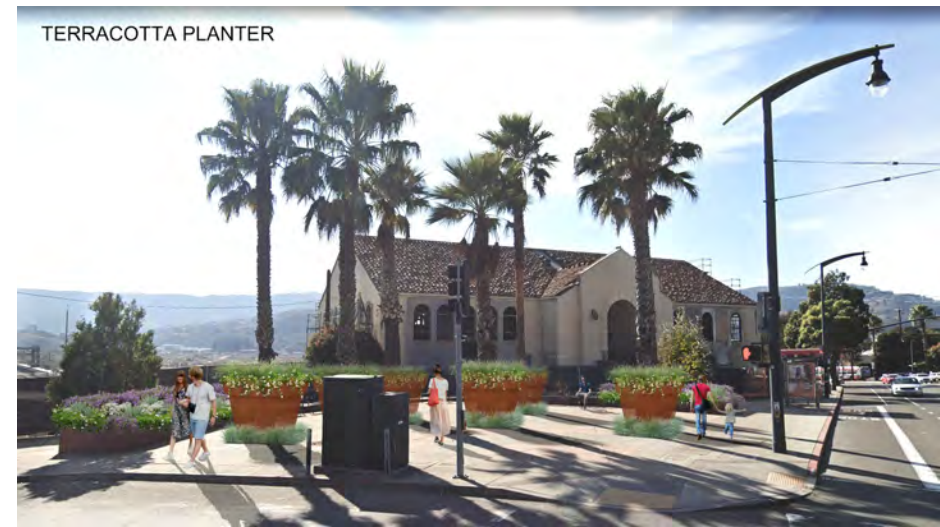
*Arctostaphylos 'Sunset'*  
Sunset Manzanita



*Achillea millefolium*  
w/*Salvia spathacea*  
Yarrow  
Hummingbird Sage



# Community Landscaping Project



# Our Team

## Baylands Development Inc.

- Greg Vilkin:  
[gvilkin@bdisf.com](mailto:gvilkin@bdisf.com)
- Stephanie Shakofsky  
[sshakofsky@bdisf.com](mailto:sshakofsky@bdisf.com)
- Eric Aronsohn:  
[earonsohn@bdisf.com](mailto:earonsohn@bdisf.com)

## BergDavis Public Affairs

- Evette Davis  
[edavis@bergdavis.com](mailto:edavis@bergdavis.com)
- Luis Cuadra  
[lcuadra@bergdavis.com](mailto:lcuadra@bergdavis.com)

# Questions & Answers

**1. Raise your hand to speak by using the Zoom Hand Raise.**

Everyone will be muted until they are called on to speak.

Please share your name the first time you speak.

**2. Turn your camera on and raise your physical hand.**

**3. Enter your questions or comments into the chat.**

Questions will be read and answered aloud.

**4. Email [Lily.Langlois@sfgov.org](mailto:Lily.Langlois@sfgov.org)**

# How To Raise Hand For Q&A

## App:

- Go to participants at the bottom of screen
- See hand icon next to your name or at the bottom of participants list (click more "... " if needed)

## Web:

- Hand icon at the bottom of screen

## Phone:

- \*9 to Raise hand and \*6 to mute/unmute
- (cannot lower hand using phone)

Web: Hand icon at the bottom of screen



App: Go to participants at the bottom of screen

