

San Francisco Long Range Transportation Planning Program

Market Octavia CAC



April 18, 2016

OVERVIEW

San Francisco's Long-range Transportation Planning Program (LRTPP) is a multi-agency collaborative effort to tackle San Francisco's transportation challenges today and into the future.



Why do we need a Long Range Transportation Planning Program?



How do we meet our current and future demand while also channeling growth?



Key Components of the Long Range Transportation Planning Program

Transportation Vision – 2016/17

- 50-year time horizon – where are we aiming?
- Understand long term capacity needs
- Develop land use alternatives and transportation networks

Transit Modal Concept Study - 2017

- 25 Year timeframe
- Identify and prioritize corridor investments to achieve the established Vision
- Identify key issues and potential regional coordination opportunities to advance projects

SFTP Update – 2018

- Coordinate and integrate the findings from modal studies, including regional transit
- Develop financially constrained investment plan

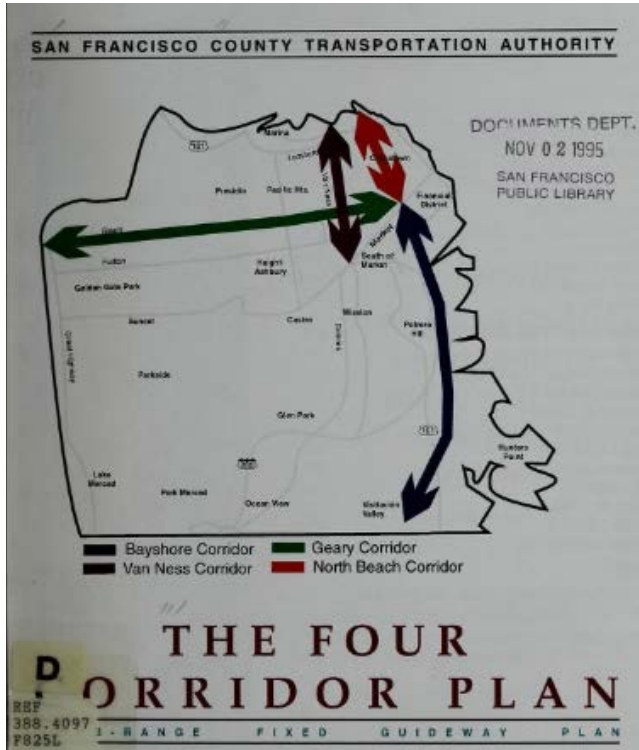
Transportation Element Update – 2018

- Policies that need to guide and codify our decision-making and day to day implementation
- CEQA analysis

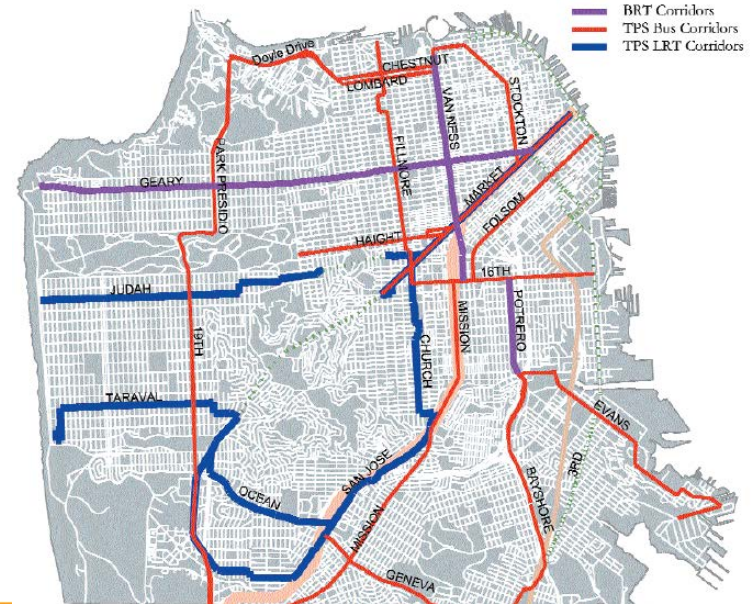
Related efforts:
Freeway and Traffic
Management
Strategy; Subway
Master Plan

Stakeholder input and
community conversations

When have we undertaken this kind of Long-range Planning before?

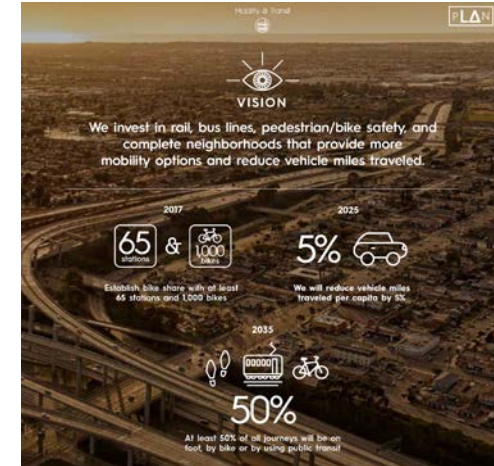


Transit Priority Network



Approach

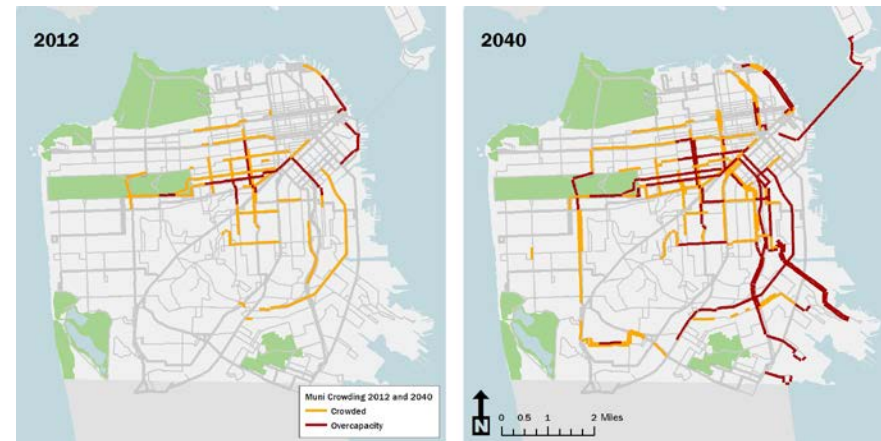
- ▶ **Understand people's transportation challenges; solicit input on goals and values (May/June)**
- ▶ **Collaborate with public to shape Vision Scenarios (Sept./Oct.)**
 - ▶ **Address big policy questions, e.g. how to think about:**
 - **Cross-bay, east-west connections**
 - **Growing downtown and transit capacity needs**
 - **Regional transportation to address equity issues**
 - **Local connectivity**
 - **Others ?**



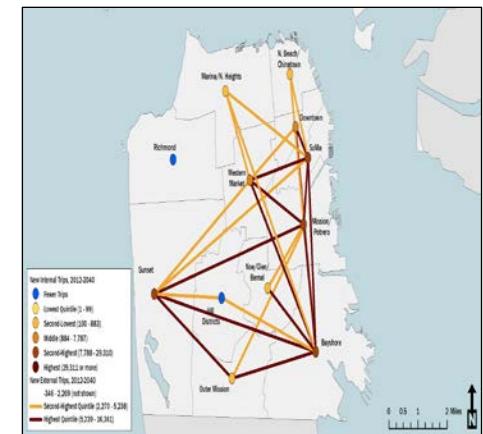
Example detailed planning work to be done

- ▶ Elements from the Vision – identify growth corridors for potential rail/subway investment
- ▶ Elements from Core Capacity
- ▶ Identify corridors warranting major investment between key centers
 - ▶ Public Input
 - ▶ Corridors previously identified/studied (e.g. Caltrain Downtown extension, Market, Geary, Central Subway III, M-Line, Geneva)
 - ▶ New Corridors emerging from analysis

Transit Crowding,



Local Vehicle Trip Growth Markets (2040)



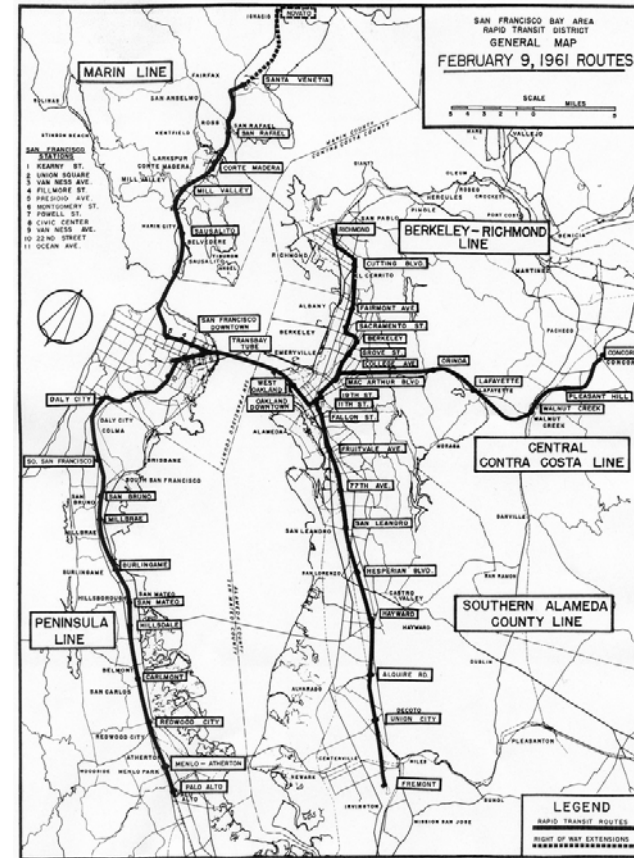
Source: SFCTA 2013 SFTP

What do you think is most important or relevant for thinking about transportation in the long term? ?

- ▶ **Questions around housing affordability? (Vision goals & objectives)**
- ▶ **Questions around neighborhood connectivity and quality of life?**
- ▶ **Questions around the role of the City in a growing region?**
- ▶ **Questions around engaging the next generation of users and residents of San Francisco's transportation system?**

What will it take? How can you help?

- ▶ Visioning Process: Looking ahead to consider uncertainties



Contacts for this Presentation:

Marisa Espinosa

Long-range Transportation Planning

Marisa.espinosa@sfgov.org



SFMTA
Municipal
Transportation
Agency



SAN FRANCISCO
PLANNING
DEPARTMENT