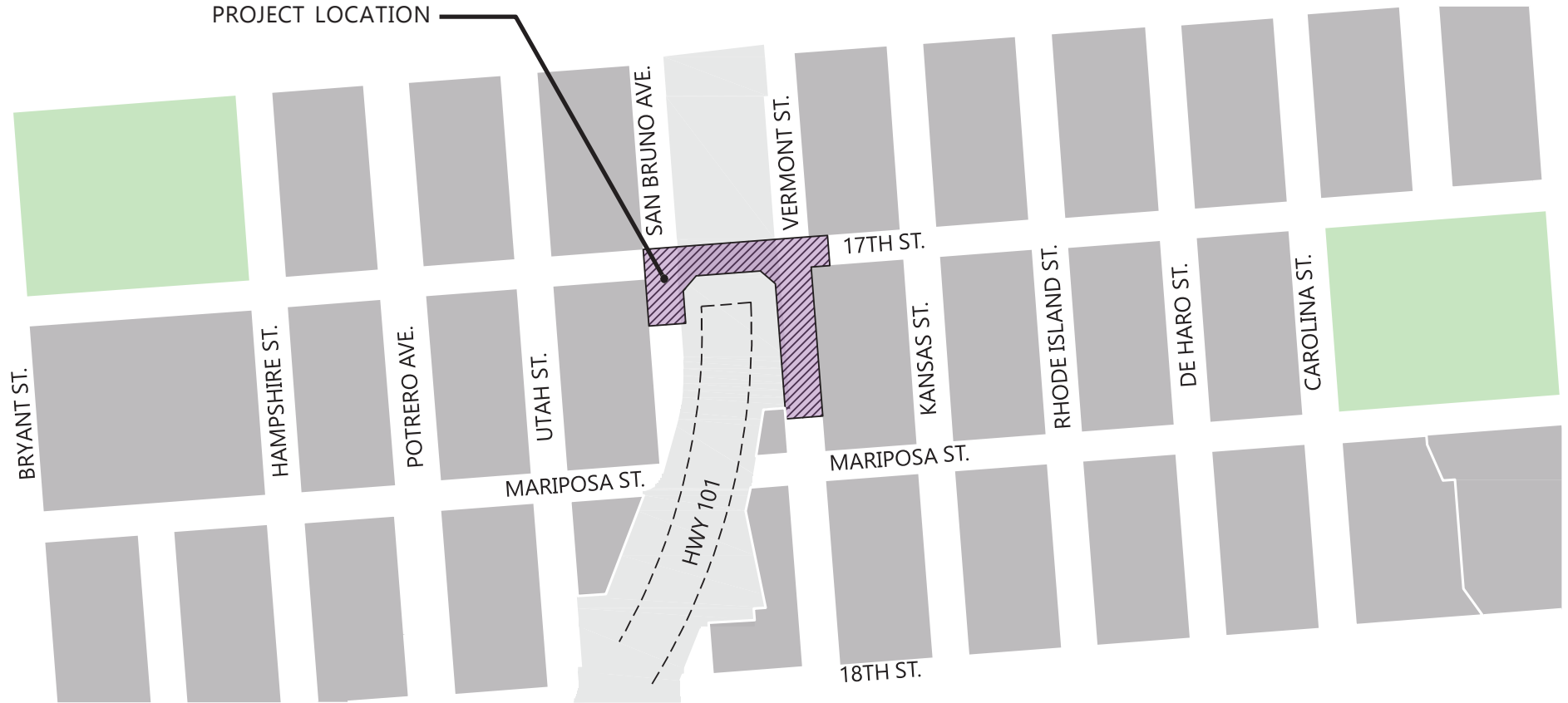




EN CAC
September 2021 Meeting

POTRERO GATEWAY

PROJECT LOCATION



VICINITY MAP 

PROJECT OVERVIEW

REVITALIZE AND RECONNECT THE POTRERO HILL NEIGHBORHOOD SEPARATED BY THE US 101 CREATING A GATEWAY AND SAFE PASSAGEWAY UNDER THE FREEWAY OVERPASS ALONG 17TH ST FROM VERMONT ST TO SAN BRUNO AVE

GOALS

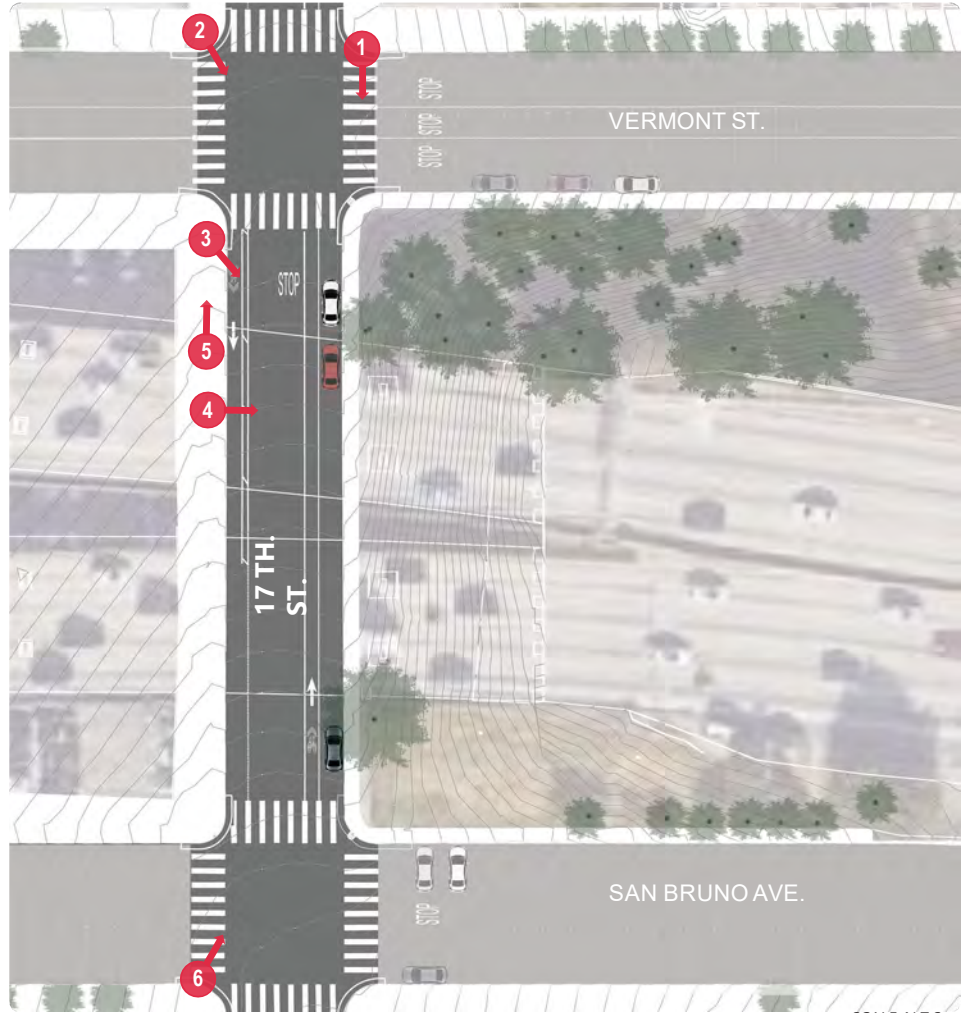
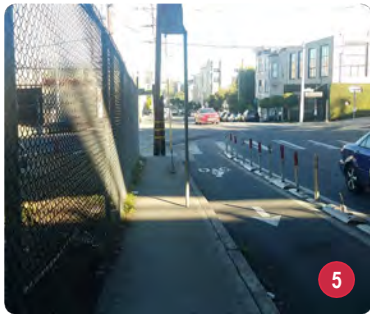
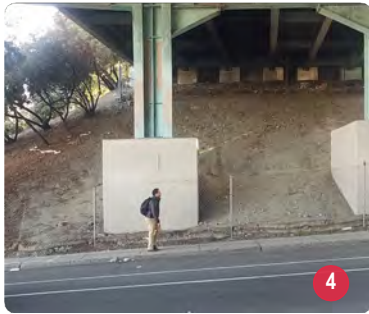
- IMPROVE SAFETY ALONG THE CORRIDOR
- CREATE A MORE ATTRACTIVE PEDESTRIAN ENVIRONMENT
- IMPLEMENT BIKE SAFETY FEATURES

KEY ELEMENTS

- WIDENED SIDEWALKS & PEDESTRIAN BULB-OUTS
- PROTECTED BICYCLE LANES
- IMPROVED LANDSCAPING
- NEW FENCING
- ROADWAY DIET & PARKING MODIFICATIONS
- DECORATIVE PAVING

POTRERO GATEWAY

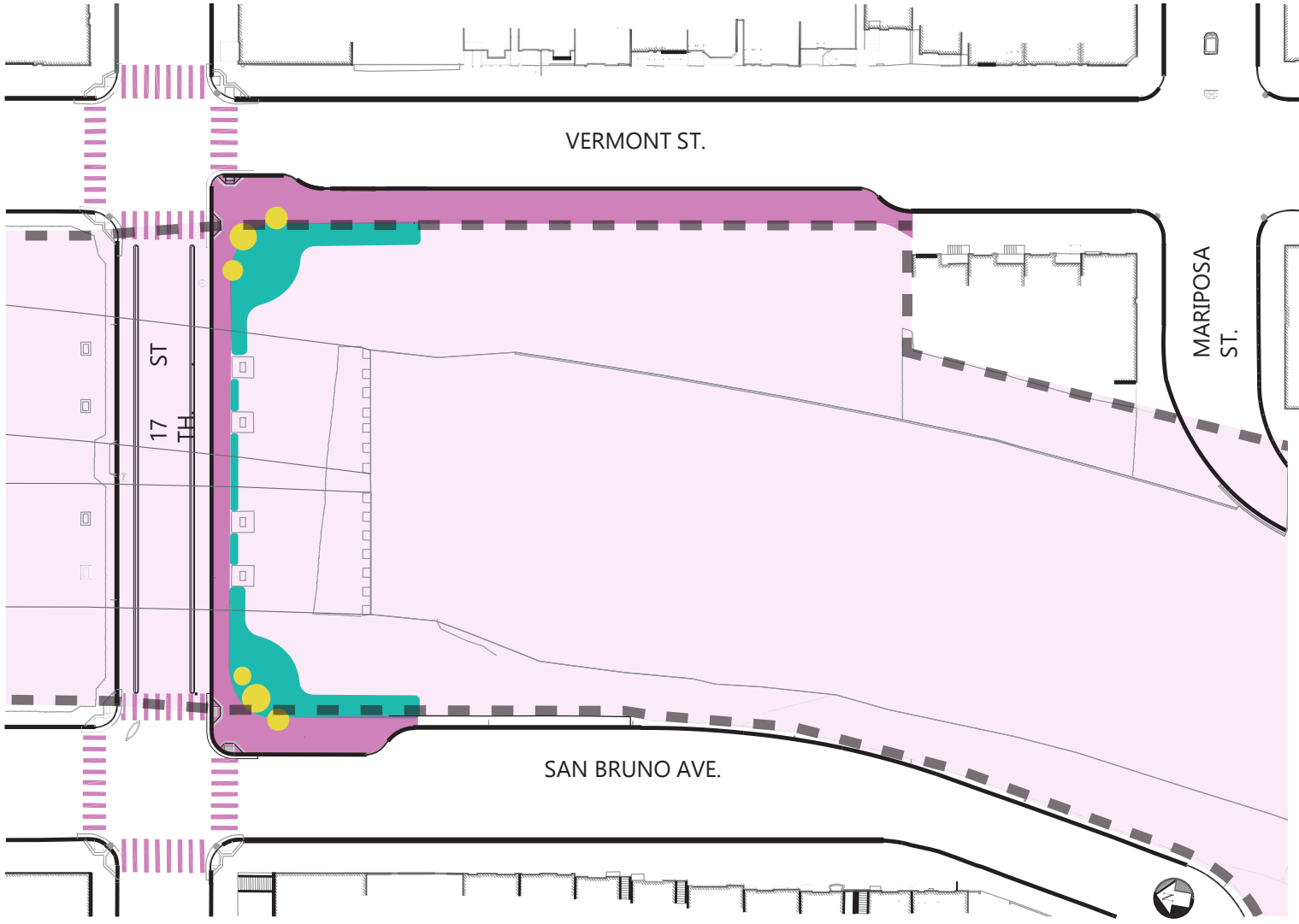
|



SCALE: N.T.S.

POTRERO GATEWAY EXISTING CONDITIONS |





STREETScape IMPROVEMENTS

- WIDENED SIDEWALK
- PEDESTRIAN BULB-OUTS
- DECORATIVE PAVING
- PROTECTED BIKE LANES

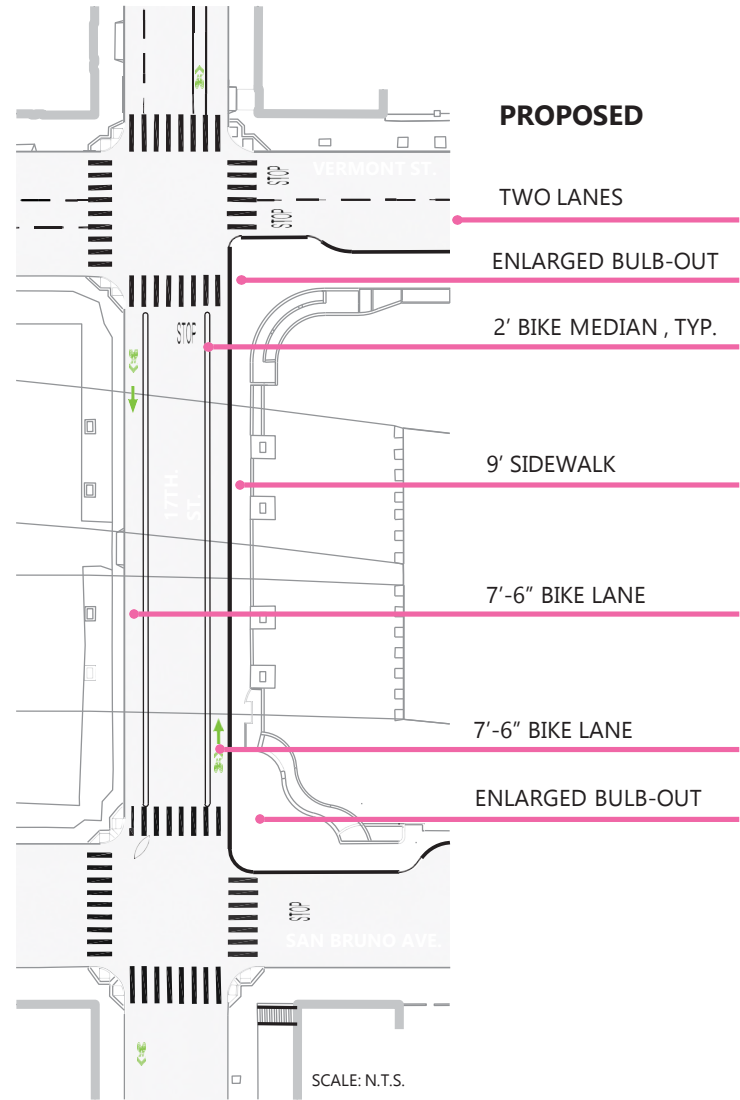
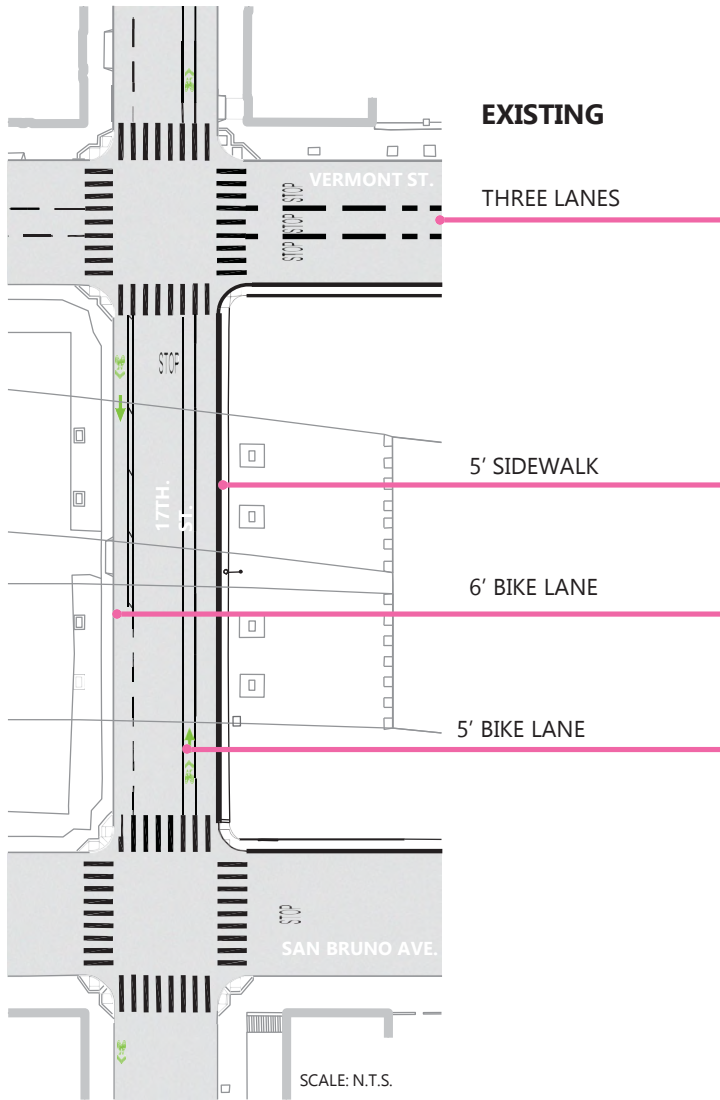
LANDSCAPE ARCHITECTURE

- FENCING
- PLANTING
- SOIL STABILIZATION

PUBLIC ART

- SCULPTURE

POTRERO GATEWAY
EXTENT OF WORK |



POTRERO GATEWAY



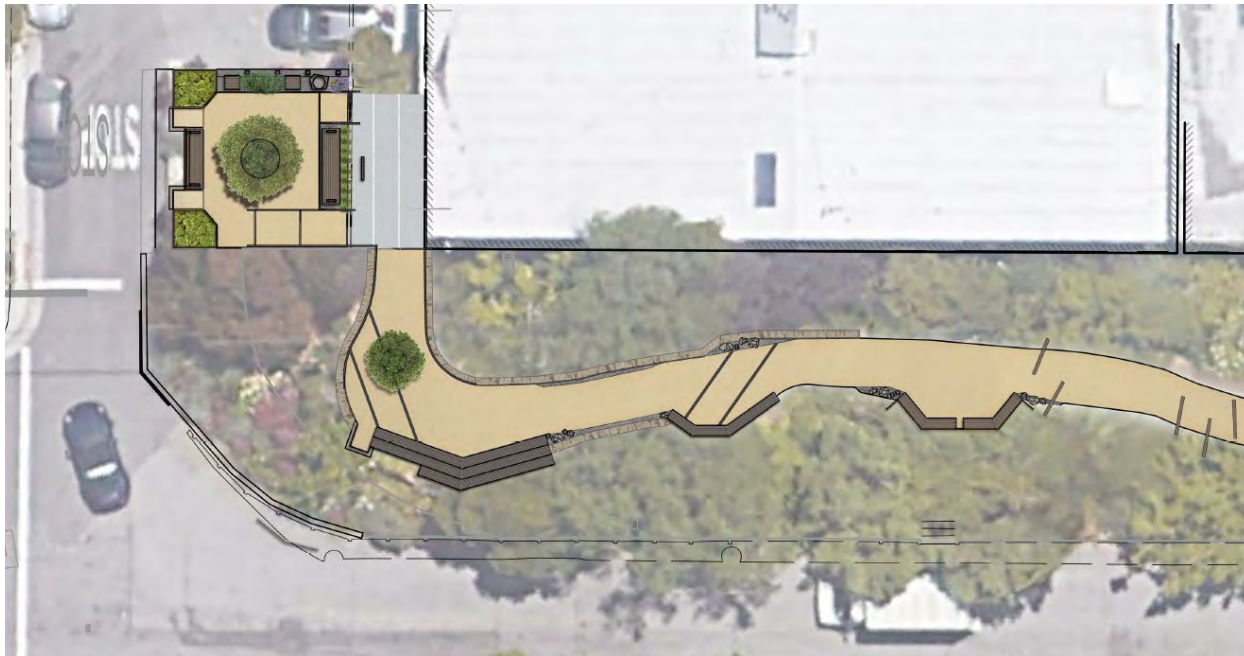
POTRERO GATEWAY



POTRERO GATEWAY

Minnesota Streetscape Project

Project Description: The Minnesota Streetscape project will install sidewalks and streetscape elements (trees, lighting, etc.) along the east side of Minnesota St. from 23rd to 25th Streets in Dogpatch. The project will also make modifications to the existing linear green space known as the Minnesota Grove for increased usability and improved safety.

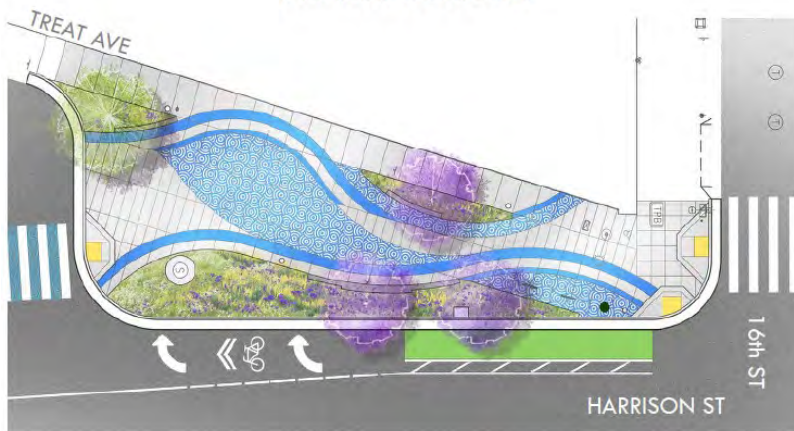


Project Status: Advertise Nov 2021

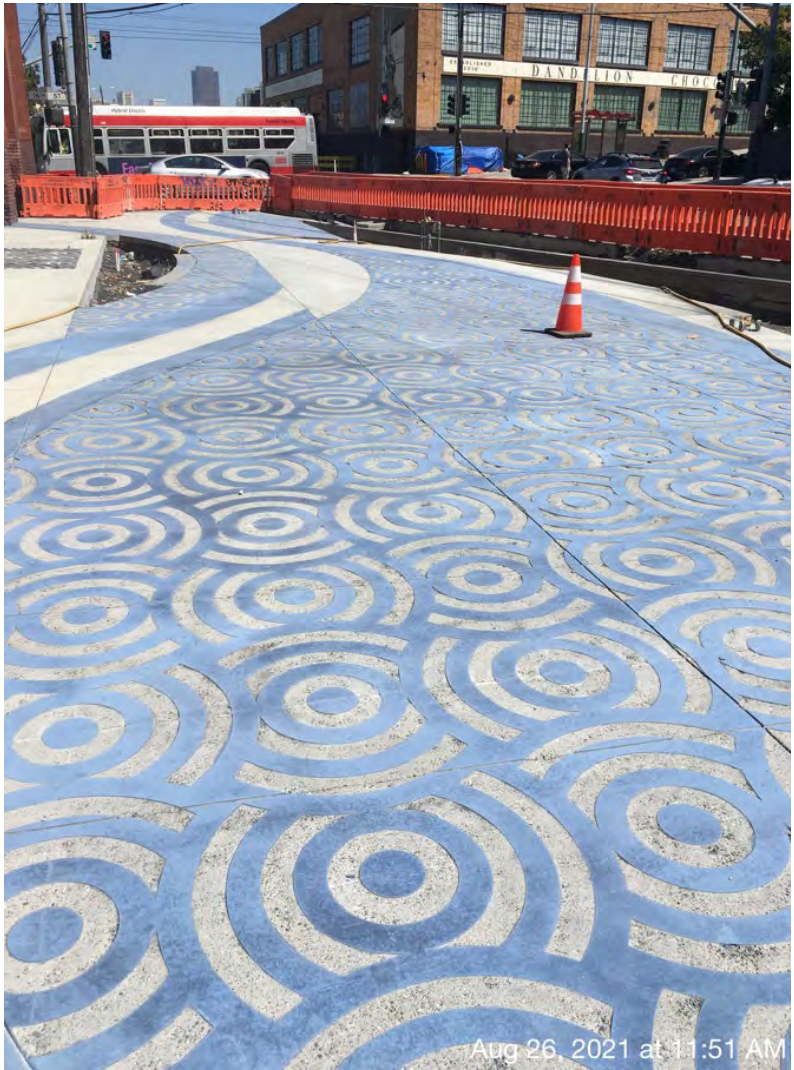
Treat Plaza (*South Plaza*)

Project Description: The project will improve safety, comfort, and mobility for pedestrians, cyclists, transit riders, and motorists. The sidewalk will be extended farther into the intersection, and planters will offer decorative seating and provide a protective barrier to traffic.

PLAZA DESIGN



Project Status: Substantial Completion Anticipated Winter 2021



Highlights:

- Ribbon-Cutting Anticipated in mid-November 2021
- Traffic Circulation Reversal (SB to NB from 17th – Harrison)
- Programming Efforts with Planning / OEWD



Thank you!